

All-In-One Touchscreen Quick Setup Guide



AWE Learning All-In-One

Components

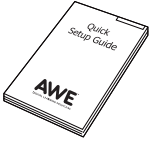
- AWE Learning All-In-One System
- AWE Learning Kid-Friendly Keyboard & Mouse
- Power Cables and Replug Audio Adapter

Support: 866.463.6357 | Sales: 888.293.0272 | info@awelearning.com

www.awelearning.com

10.08.2018

Parts Identification



Welcome Pack



AWE Learning Keyboard & Mouse



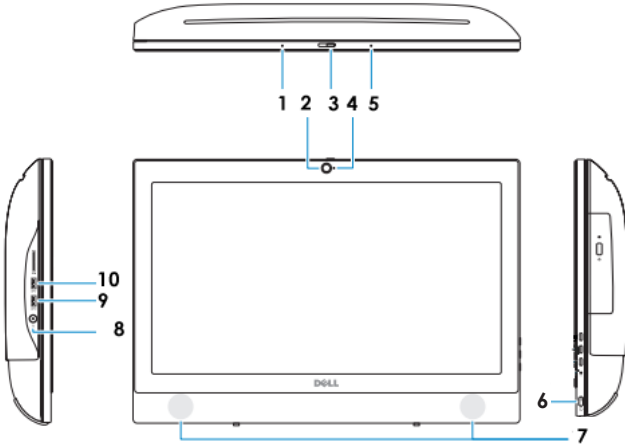
Power Cord



Replug Audio Adapter

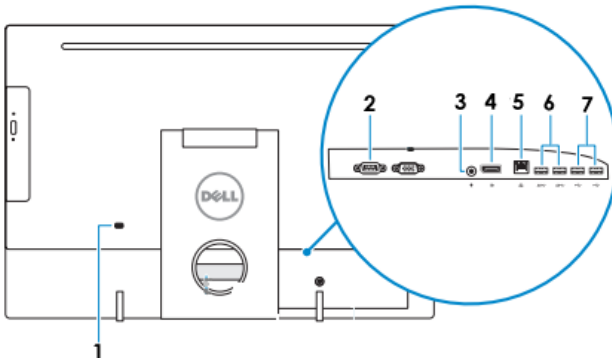
Connections for Power, Keyboard, Mouse, Headphones, and Network

➤ Workstation Side and Front View



1. Microphone
2. Camera
3. Camera privacy latch
4. Camera status light
5. Microphone
6. Power button and power status light
7. Stereo Speakers
8. Headset port
9. USB 3.0 port with PowerShare
10. USB 3.0 port

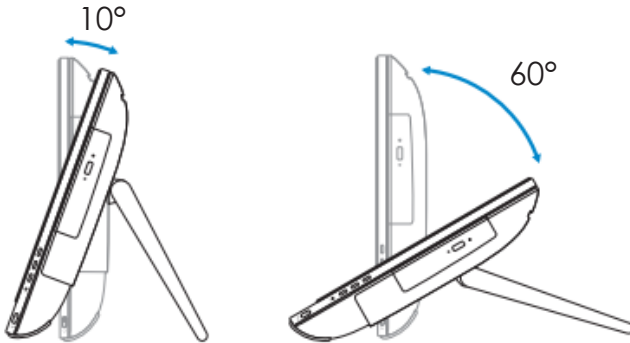
➤ Workstation Rear View



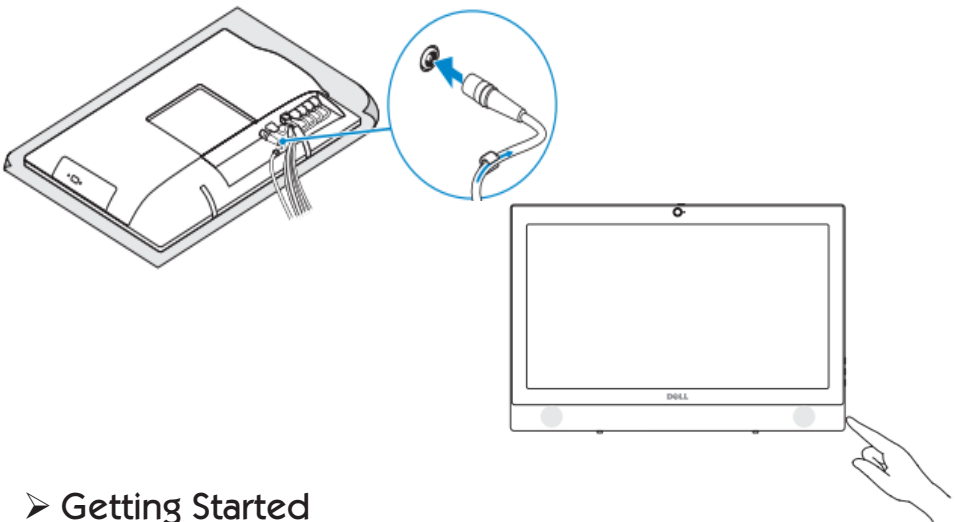
1. Security cable slot
2. Serial port
3. Power connector port
4. DisplayPort
5. Network Port
6. USB 3.0 ports
7. USB 2.0 ports

Setup

➤ Position Your System



➤ Connecting the Power and Turning On



➤ Getting Started

When you setup your AWE Learning workstation for the first time, we recommend that you set the following functions within the Administrative Control Panel:

1. Administrative Control Panel Password

To access the Administrative Control Panel, click on the AWE logo in the top right corner of the desktop interface. This will display information about your workstation. Click on the Open Administrator Panel icon, the first time this loads you will be asked to create an Administrator Password. This password will be required every time you access the Administrative Control Panel, so please keep your password details safe.

2. Set the Date & Time

For synchronization and accurate usage statistics, it is essential that the workstation time is correct. To set the date & time, click on the button labeled Edit Time/Date from the Administration settings tab. Set the current time, time zone, and date.

3. Set a Shutdown Password

We recommend setting a shutdown password to prevent children from turning off the workstation. A shutdown password can be set from the Session/Print Control tab. Click the button to enable Session Password to Shutdown and enter a session password to set. This password will be required each time you turn off the computer.

4. Access the Customer Portal

The Customer Portal is a great resource for you to access detailed utilization statistics for your workstation. All statistics are automatically uploaded on networked AWE Learning workstations, or can be manually uploaded via USB. This allows you to access detailed reporting, utilization statistics, view account information, check warranty status, and much more.

Access the Customer Portal from the AWE Learning website at www.awelearning.com

5. AWE Learning Admin Guide

For further information about your AWE Learning workstation, please read the Admin Guide that is accessible from the Help menu in the Admin Control Panel of your workstation.

➤ Notes

- **Do not hang or place any objects (such as headphones, signage) on the touchscreen. This will affect functionality. If an object is touching the screen, remove it and reboot.**
- **For the integrity and functionality of your AWE Learning workstation, we strongly recommend using a surge protector.**
- **Please use the supplied “Replug” audio adapter when connecting headphones to the workstation. This will prevent the headphone jack from being damaged.**
- **We recommend that you run cables underneath the computer and safely secure them.**
- **This workstation comes with an industry leading three-year limited warranty and access to our excellent U.S.-based Customer Support team. Please review your purchase contract for further warranty information.**

➤ Support

For any inquiries, please review our list of Frequently Asked Questions (FAQs) on our website at www.awelearning.com/support

Our Customer Support team is available Monday-Friday, 9am-5pm EST, and can be reached by phone at 1-866-463-6357 or by email at support@awelearning.com

AWE LEARNING

Support: 866.463.6357 | Sales: 888.293.0272 | info@awelearning.com

www.awelearning.com

© 2018 AWE Acquisition, Inc. All rights reserved.