

# AWE Learning Tablet

## Platinum Quick Setup Guide



## AWE Learning Tablet Components

AWE Learning Tablet

Stylus

Power Adapter

Quick Setup Guide

Detachable Keyboard (included for ease of access to Admin Panel)

*Note: Keyboard can not be used with the optional tablet bumper.*

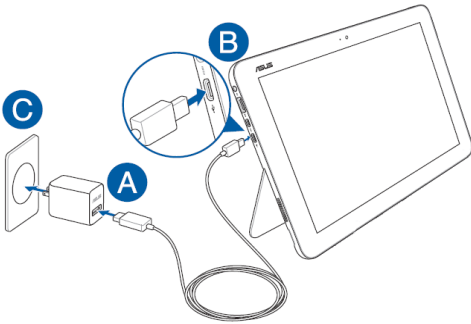
Support: 866.463.6357 | Sales: 888.293.0272 | [info@awelearning.com](mailto:info@awelearning.com)

[www.awelearning.com](http://www.awelearning.com)

02.11.2019

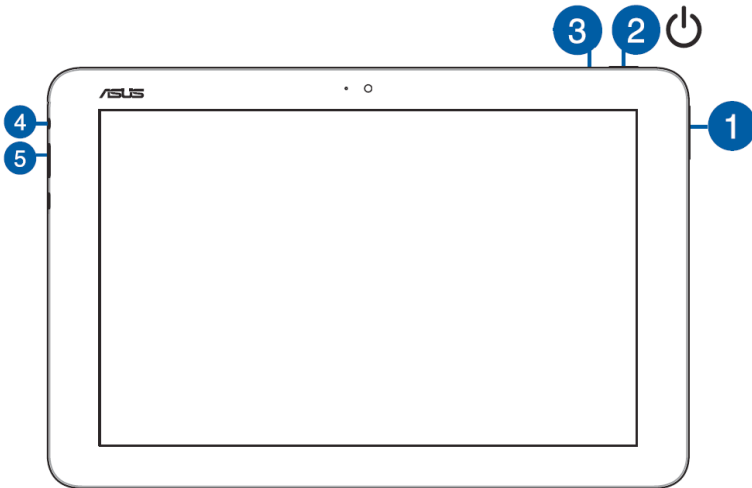
# Setup

Plug in and charge the tablet before first use. After charging the battery, press and hold the power button for one (1) second to turn on the tablet.



## Charging your tablet

- A. Connect the micro USB cable to the power adapter.
- B. Plug the micro USB connector into your tablet.
- C. Plug the power adapter into a grounded power outlet.



### 1. Volume button

The volume button allows you to increase or decrease the volume level of your Tablet.

### 2. Power button

Press the power button to turn your Tablet on.

In the event that your Tablet becomes unresponsive, press and hold the power button for at least ten (10) seconds to force it to shut down.

### 3. Two-color battery charge indicator

**White:** Plugged in, charging, and battery between 95% and 100%.

**Orange:** Plugged in, charging, and less than 95%.

**Lights off:** The Tablet is running on battery power and is between 10% and 100%.

### 4. Headphone / Headset jack

This port allows you to connect amplified speakers or headphones.

### 5. USB 3.0 port

The USB 3.0 port allows for the import and export of admin settings and statistics.

# Tablet Gestures

The tablet includes built-in gestures so you can easily navigate your tablet. To successfully use gestures, you must first:

1. **Hold your finger on the screen until you see a square around your finger.**
2. **Draw the gesture below to begin your desired action.**



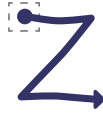
Show  
Keyboard



Hide  
Keyboard



Mute  
Sound



Exit  
Application



Admin  
Panel

# Getting Started

When you setup your AWE Learning tablet for the first time we recommend that you set the following functions within the Administrative Control Panel:

## 1. Administrative Control Panel Password

To access the Administrative Control Panel tap on the AWE Learning logo in the top right corner of the desktop interface, this will display information about your workstation. Click on the Open Administrator Panel icon, the first time this loads you will be asked to create an Administrator Password. This password will be required every time you access the Administrative Control Panel, so please keep your password details safe.

## 2. Set the Date & Time

For synchronization and accurate usage statistics it is essential that the tablet time is correct. To set the date & time, click on the button labeled Edit Time/Date from the Administration settings tab. Set the current time, time zone, and date.

## 3. Set a Shutdown Password

We recommend setting a shutdown password to prevent children from turning off the tablet. A shutdown password can be set from the Session/Print Control tab. Click the button to enable Session Password to Shutdown and enter a session password to set. This password will be required each time you turn off the tablet.

## 4. Access the Customer Portal

The Customer Portal is a great resource for you to access detailed utilization statistics for your tablet. All statistics are automatically uploaded on networked AWE Learning tablets, or can be manually uploaded via USB and the included Micro-USB adapter. This allows you to access detailed reporting, utilization statistics, view account information, check warranty status and much more.

Access the Customer Portal from the AWE Learning website [www.awelearning.com](http://www.awelearning.com)

## 5. AWE Learning Admin Guide

For further information about your AWE Learning tablet please read the Admin Guide that is accessible from the Help menu of the Admin Control Panel of your tablet, or on the AWE Learning website.

# Notes

- This tablet comes with an industry leading two-year limited warranty and access to our excellent U.S. based Customer Support team. Please review your purchase contract for further warranty information.
- For your convenience, a stylus is included to easily perform all Admin Panel functions.
- A Micro-USB to USB adapter is provided so a USB thumb drive can be connected to apply software updates or download usage statistics to upload to the Customer Portal.
- To use the touch keyboard with applications use the Show Keyboard gesture. The touch keyboard behaves like a standard keyboard. You can change the position of the touch keyboard by dragging it around the screen.
- When fully charged, the battery will last approximately eight (8) hours. Battery life will vary depending on usage. We recommend charging the tablet each night to restore a full battery charge.
- If the tablet is idle for more than two (2) hours, it will automatically shutdown to save battery. If the tablet is connected to the charger, it will not shutdown and will display a screensaver.
- When your battery charge drops below 8%, a warning message will appear. At 5% your system will safely shut down.
- We have created Guest accounts for the content programs that require user accounts.
- Some programs may not save your progress if you exit using the exit gesture; we recommend exiting these programs using their own exit button
- If your tablet becomes unresponsive, press and hold the power button until the tablet turns off.
- A complete Tip Sheet can be accessed directly from the Index on the home screen of the AWE Learning system.

## Support

For any inquiries, please review our list of Frequently Asked Questions (FAQs) on our website at [www.awelearning.com/support](http://www.awelearning.com/support)

Our Customer Support team is available Mon-Fri 9am-5pm EST and can be reached by phone at 1-866-463-6357 or by email at [support@awelearning.com](mailto:support@awelearning.com)

# AWE LEARNING

Support: 866.463.6357 | Sales: 888.293.0272 | [info@awelearning.com](mailto:info@awelearning.com)

[www.awelearning.com](http://www.awelearning.com)

© 2017 AWE Acquisition, Inc. All rights reserved.