



Introducing PLATINUM Version 4!

Inspiring discovery. Preparing lives.™

About AWE Learning

Our mission is to inspire an enthusiasm for learning by supporting school readiness and literacy in the community.

- Established in 1994
- More than 30 years serving public libraries - 38,000 workstations sold
- First Early Literacy Station launched in 2002
- Platinum workstations introduced in January 2019
- Platinum Version 4 launched November 2025



Over 30 Years of Digital Learning Resources



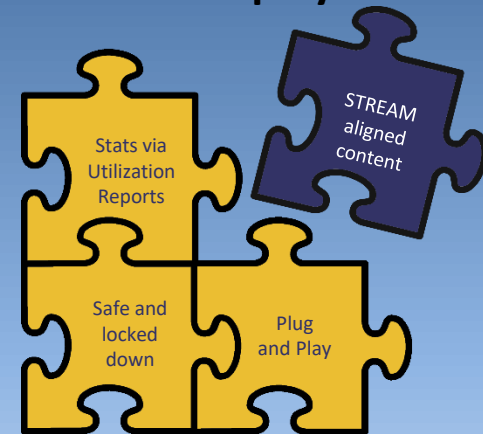
- 2023 Platinum Version 3 launched with nearly 250 titles, new interfaces, avatars and upgraded administrative panel.
- 2025 Platinum Version 4 launches with more new content, faster technology, expanded interface for youngest learners, and consolidated administrative customer portal.



Benefits of Play-Based Discovery

Guided digital experiences that complement—not replace—traditional play.

- **Cornerstone of early childhood development**
- **Nurtures curiosity**
- **Builds foundational literacy and STREAM skills**
- **Promotes lifelong learning habits**
- **Prepares lives for confidence and success**



Library Success depends on Integrating technology into these experiences with intentionality.

- **Balance digital engagement** with healthy screen habits and easy and safe access
- **Combines curated technology resources** with professional guidance and programming
- **Align technology** with storytimes, seasonal programs, and curriculum goals
- **Support varied learning styles** visual, auditory, kinesthetic, logical, social, and solitary
- **Foster digital responsibility** and computational thinking from an early age

Purposeful – Perpetual – Productive Early Literacy

250+ STREAM Software
Titles For Age Levels 2-12

Local Administrative User
Settings and Preferences
– Consolidated Actual
Usage Statistics



Thousands of Preloaded
Discovery Learning
Activities

Personal Education Plans
(PEP)
- Create and Schedule
Locally Curated
Experiences



Bonus ELF Child-Safe Sites
And You Tube Videos
(Internet Required)

Platinum V4

Early Literacy Station™ Platinum
Bilingual Spanish Literacy Station™ Platinum
AfterSchool Edge™ Platinum

- 250+ STREAM Software Titles
- Windows 11 – Touchscreen
- Upgraded User Interfaces
- Scheduled Custom Displays (PEP)
- Improved User Data Security
- Additional Admin Features
- Consolidated Customer Portal



Platinum Version 4!

NEW!

Introducing AWE Learning Platinum Version 4 –
Video Overview Link



NEW Content!

Featuring...



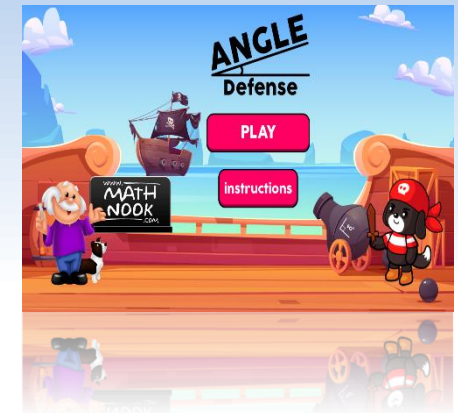
40+ Coding Activities



**E-books: Non-fiction
Fiction, & Poetry!**



**Handwriting
& More**



STREAM Aligned Interfaces



Science



Technology



Reading



Engineering



Art & Music



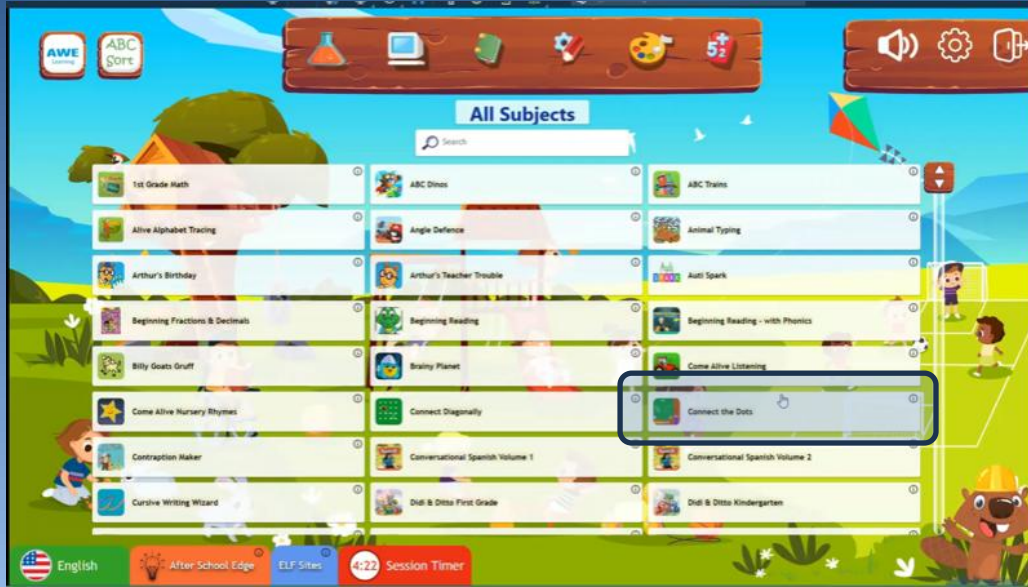
Math

Platinum V4

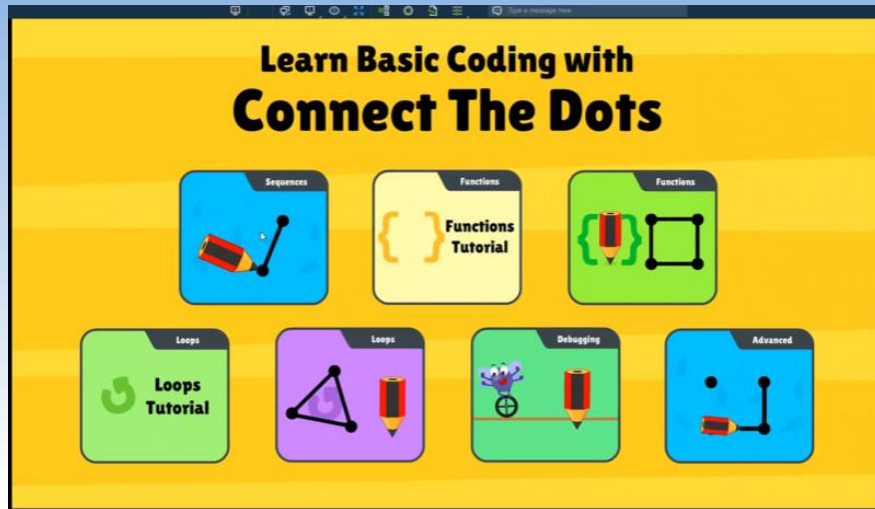
Optional landing page with fewer titles and larger icons for younger viewers



All In One Workstations



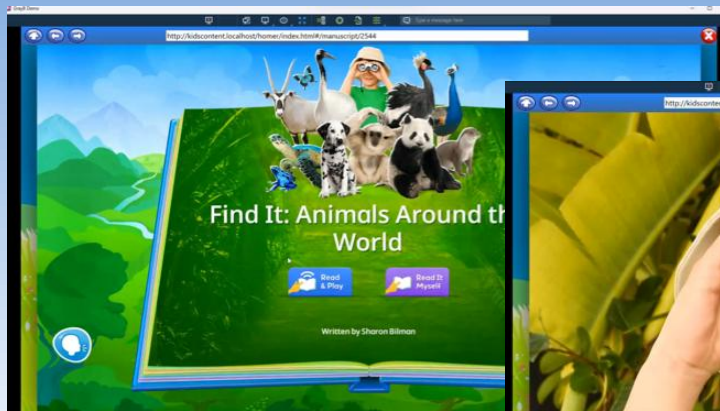
- Select or Search All Subjects
- Select by STREAM Topic
- Click on Software Title
- Select Activities
- Child Engages with Content



All-in-One Workstations



- Select or Search All Subjects
- Select by STREAM Topic
- Click on Software Title
- Select Activities
- Child Engages with Content

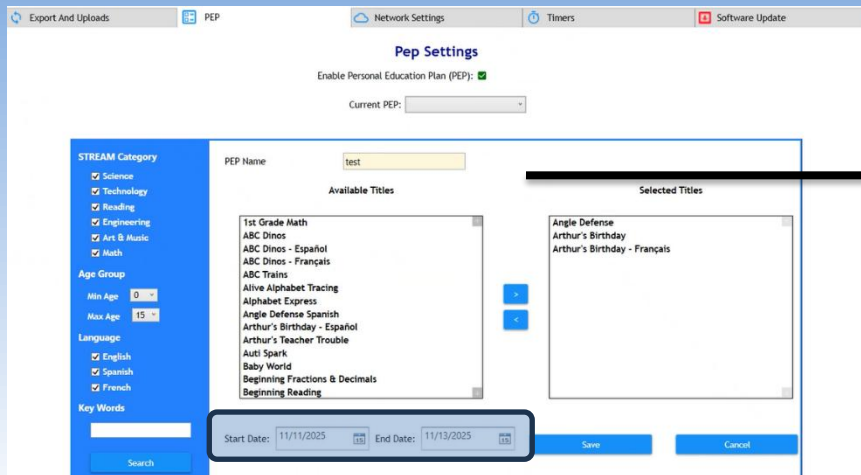


Personal Education Plans (PEP) – Customized Themes

Dynamically control which titles will be displayed for your young learners. For example, create “Math Monday” or “Science Day” and select the specific math and science programs for users to access. This enables the workstation to be integrated into your children’s programming in a specific, targeted way.

Create, manage and schedule PEP experiences through the Admin Site.

Only the selected software titles will display during the PEP activation period.



Plan! – Schedule start and end date

Start Date: 11/11/2025 End Date: 11/13/2025

ELF Links – Bonus Kid Safe Content Included in V4

Enabled ELF Links Display ELF Sites Button

1. Click on ELF Sites Button Displays Bonus Content
2. Click On Content Site Opens The Site for Activities and Discovery
3. Note: External Hyperlinks are Disabled Within the Site – No Access To Browser

The image illustrates the process of accessing bonus content through ELF links in three steps:

- Step 1:** The main interface shows a toolbar with various icons (flask, laptop, book, pencil, palette, plus) and a search bar. A large purple number '1' is overlaid on the right side.
- Step 2:** A list of content sites is displayed, including 'A Sailors Life For Me', 'ABC Mouse', 'Air and Space Museum', 'Alaska: A Birds Eye View', 'American Girl', 'Animal Fact Guide', 'AWE Platinum', 'Career Exploration', 'CIA World Factbook', 'Cool Kid Facts', 'Curious George', 'Fact Monster', and 'Fun Brain Stories'. A callout box labeled 'ELF Sites' points to the 'Curious George' link. A large purple number '2' is overlaid on the right side.
- Step 3:** The 'Curious George' website is shown, featuring a 'Magic Seeds' game and a 'Play Game' button. A large purple number '3' is overlaid on the right side.

RoboGarden Add On Coding Activities

RoboGarden

Exclusive AWE Learning Partner!

Coding now available on Early Literacy Station™ Platinum, Bilingual Spanish & French Literacy Station, AfterSchool Edge™ & Platinum Online



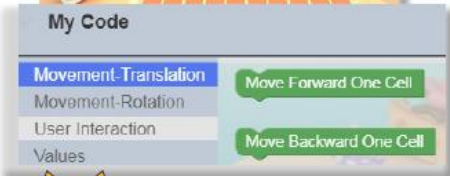
RoboGarden is an easy to understand, hands-on educational software title where students take part in *active learning*. Fully equipped to teach coding literacy from scratch, RoboGarden reduces the need for a tech-savvy teacher.

*1 Journey, *Get to Know the World in the Party*, is included on all Platinum workstations and Platinum Online!

What's included in the Journey?

Learn and practice simple movements, and how to set color, text, and print through:

- ★ Tutorials
- ★ 40 coding activities
- ★ Quizzes



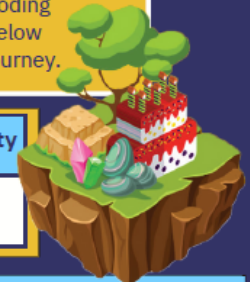
Want to expand your coding skills?

Our new Coding Add-On Bundle gives your users a total of 7 **Journeys**. Introduce your users to more complex coding terms and skills. Each Journey includes tutorials, activities, and quizzes. Add-on bundle features 250+ coding activities!

*To access RoboGarden, AWE Learning Users must create a Robogarden Log-in (Username & Password) through the application.

Journeys Breakdown

RoboGarden's Journeys introduce children to various blockly coding concepts, increasing in difficulty with each activity. The chart below breaks down the skills introduced and practiced within each Journey.



First Journey INCLUDED on all Workstations and Platinum Online!

Get to Know the World in the Party

- Robo Simple Movement
- Set color, set text, print

Advance your coding skills with the RoboGarden Add-On Bundle! Featuring 6 more Journeys!

Sense the Fun in the Birthday Party <ul style="list-style-type: none"> • Repeat loop • Advanced Motors • Reading field (sensors) 	What if Robo Goes to the Moon <ul style="list-style-type: none"> • Variable operations • Loops • Conditions
Let's Go to the Moon, Back and Forth <ul style="list-style-type: none"> • Variable Operations • Variables in Loops • Advanced math expressions on variable 	Need a Break, Build a Snowman <ul style="list-style-type: none"> • Loops • Conditions • Functions
What is the Function of a Snowman <ul style="list-style-type: none"> • Repeat loop • Advanced Motors • Reading field (sensors) 	Decorate the Tree from Bottom Up <ul style="list-style-type: none"> • Movement through loops • Condition • Condition inside loops



Contact us to learn more today!

888-293-0272

www.awelearning.com



250 Coding Activities across 7 Journeys!

The Reviews Are In

"We are so happy with our new computers. They arrived quickly and within five minutes we had them set-up and running. The kids have enjoyed the many options for games to play. The games are easy to navigate, and they are able to play a game or switch from one game to the next without assistance. The images are bright and clear, and the kids are eager to use the computers from the moment they enter the library doors."

- Frankie Rasmussen, Bear Lake County Library

"The machine has been performing exceptionally well, and it has quickly become a favorite among the children. It even underwent a light stress test when a toddler gave it an enthusiastic tap, which it handled without issue. Overall, it has proven to be a valuable and engaging addition to our early learning program."

- Fernando Morales, Banning Library District

"Especially for the very young ones, it's a good introduction for what they're going to encounter in school, how do I use a keyboard, how does the mouse work, how does the mouse interact with what I'm seeing on the computer screen."

- Victoria Dow, West Chester Public Library

"The AWE systems are used constantly, and they help to attract children and their families to the library on a repeated basis."

- Kim Fender, The Public Library of Cincinnati and Hamilton County

"The variety of games that are on there (AfterSchool Edge) are amazing. All the children love them, whether they're in fifth grade or in kindergarten."

- Susan Nerey, Etiwanda School District

Award Winning Titles

Editor's Choice Award –
Children's Technology Review

Editor's Choice Award for Excellence in
Design – Children's Technology Review

Parenting Media Awards Winner

Mom's Choice Award Silver Recognition

The Toy Man Seal of
Approval

Creative Child Magazine –
Preferred Choice Award

Family Choice Award –
Family Magazine Group

BETT Awards Finalist

The National Parenting
Center's Seal of Approval

Octas Awards Winner

EDDIE Award

CODiE Award

Bessie Award



All-in-One Workstation



- **Includes:** Keyboard, Mouse, Mouse Pad and 3-Year Warranty
- **Content:** Platinum V4 With Your Selected Bundle(s)
- **Workstation:** Dell and MSI Touchscreen All-in-One
- **Hard Drive:** Solid State Drive – 512GB with 8GB RAM
- **Processor:** Intel® Pentium Gold G7400 – Windows 11
- **Monitor Resolution:** 1920 x 1080 Intel® Iris® Xe Graphics

Must-Have Accessories

Enhanced Support Stand - \$191
***Reinforced Metal Plate – Tip Resistant**



Multi Outlet Surge Protector - \$35



Corded Headphones - \$42
***Youth-Sized On-Ear Pads**



Replug Breakaway Audio Connector - \$2
***Protects Workstation Headphone Jack**



Accessories Include 90-Day Warranty

Bundle Purchasing

Provide more content on one device!

1. Purchase Base Product of:

- *Early Literacy Station Platinum*
- *Bilingual Spanish or French Literacy Station Platinum*
- *AfterSchool Edge Platinum*

2. Purchase Add-On Package(s):

- *Early Literacy Station Platinum*
- *Bilingual Spanish or French Literacy Station Platinum*
- *AfterSchool Edge Platinum*
- *Coding - More than 250 coding activities, tutorials, & quizzes!*
- *Platinum Online*

3. More content for your early learners means more hours of learning and fun!



www.awelearning.com

888.293.0272

info@awelearning.com



YouTube

