

# RoboGarden

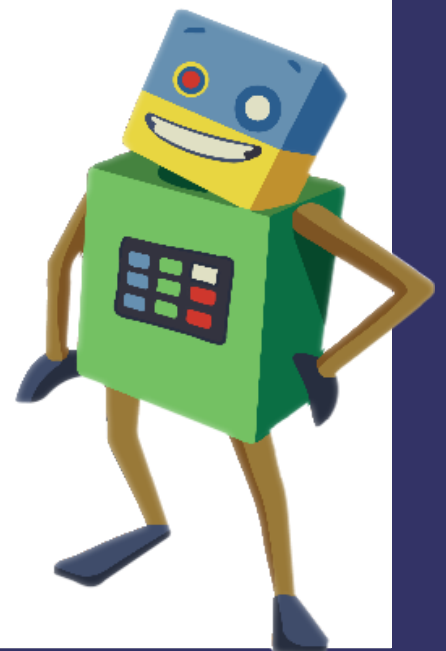
**AWE  
LEARNING**

## Sign In Guide Tutorial

RoboGarden is a fun and easy way to learn coding. It is an easy-to-understand hands-on educational title where students take part in active learning. Fully equipped to teach coding literacy from scratch, RoboGarden reduces the need for a tech-savvy teacher. Journey #1 Get to Know the World in the Party, is included on all Platinum Workstations.

To access RoboGarden, please follow the simple directions below. These directions apply to both the first journal which is included on your workstation or the add-on module which may be purchased for a separate fee.

RoboGarden requires a simple username and password to access due to licensing requirement and the added feature of patrons returning to where they left off in the game. You may either create a single shared account for all users or allow individuals to create their own separate accounts. For simplicity and ease for the user, we suggest creating a single shared account that is shared across the workstation(s) - such as "library1" for the username and "library1" for the password. Then post this information by each workstation. Alternatively, if you would like patrons to be able to save their progress then you can have individuals create their own usernames and passwords and post instructions how to do so by.



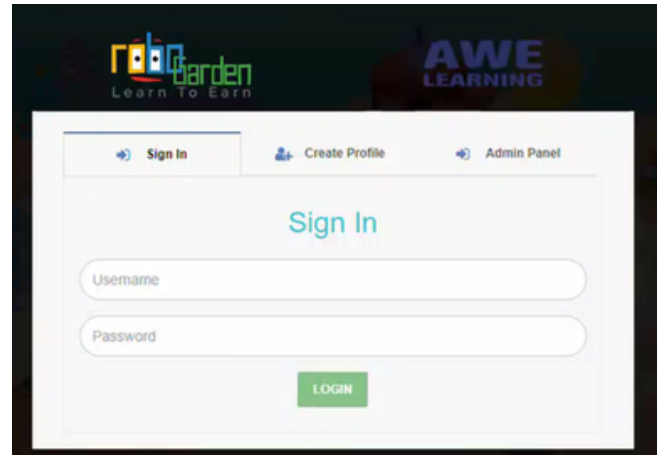
Inspiring discovery. Preparing lives.®

**AWE  
LEARNING**

# To Launch RoboGarden

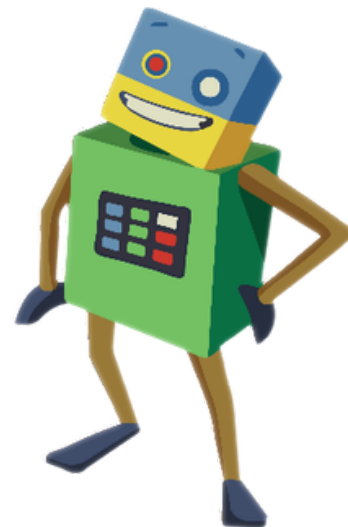
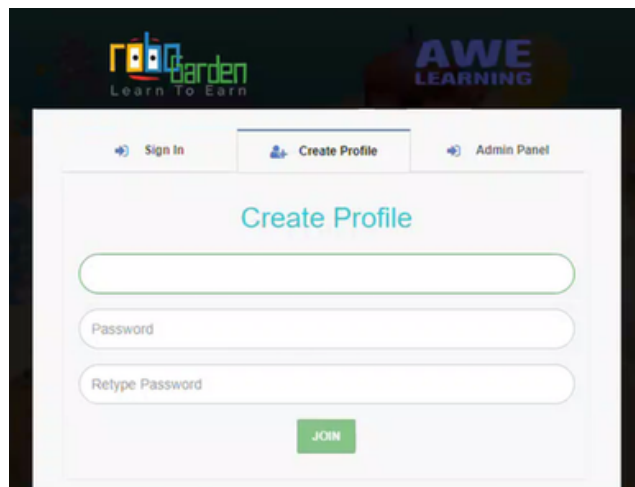
1

Open your browser and open the RoboGarden Main Page



Click CREATE PROFILE: Create a username and password

2



3

Use the created username and password to sign in

